

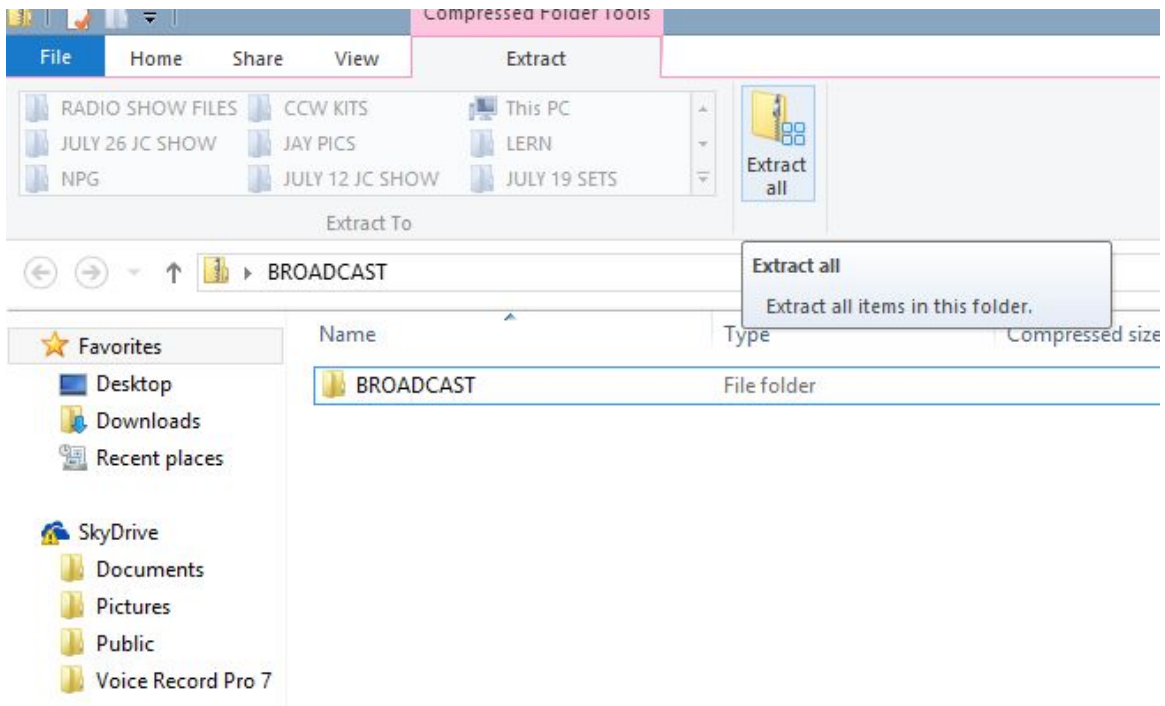
# LEADING EDGE RADIO NETWORK

## REMOTE DJ INSTALLATION AND SETUP

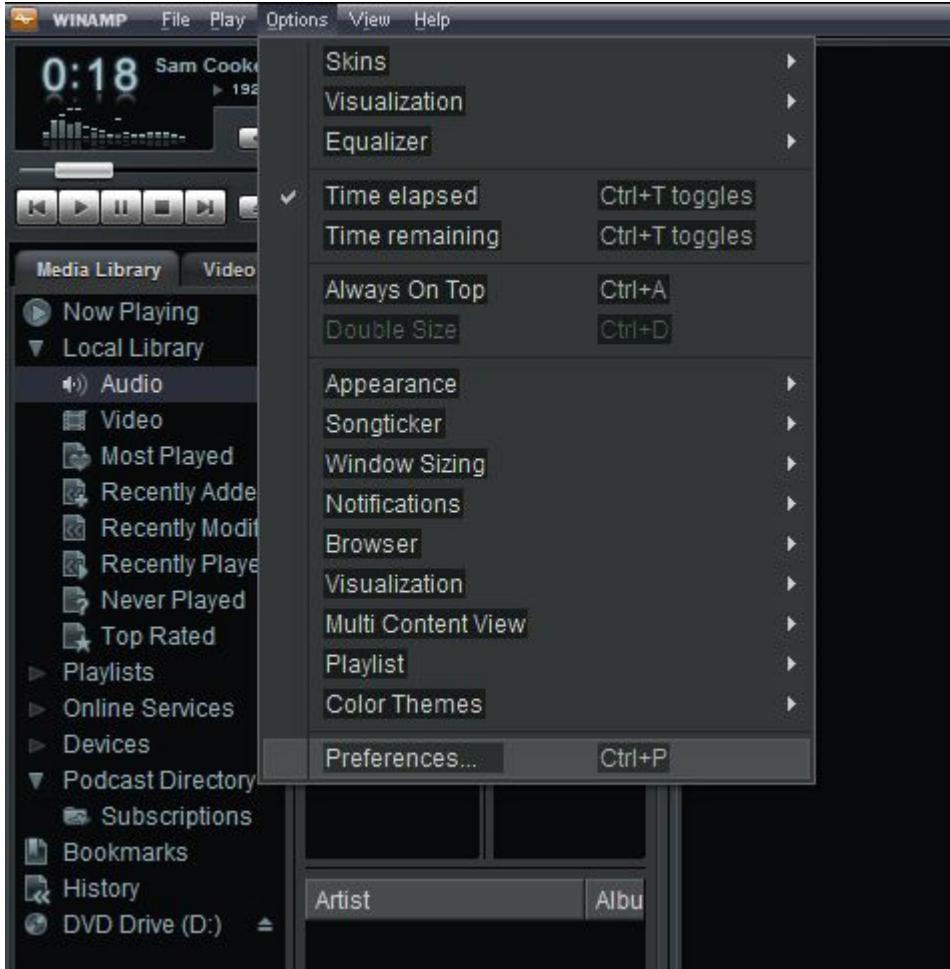
HIT THIS LINK TO DOWNLOAD INSTALLATION FILES.

<http://leadingedgeradionetwork.weebly.com/resource-files.html>

The files will be zipped. You must extract all files and then open the extracted files.



IN WINAMP CLICK ON “OPTIONS” THEN “PREFERENCES”



After extracting, open the files up and install Winamp 1<sup>st</sup> and then Shoutcast

Your Settings will be as follows:

Server address: pleer.wavestreamer.com

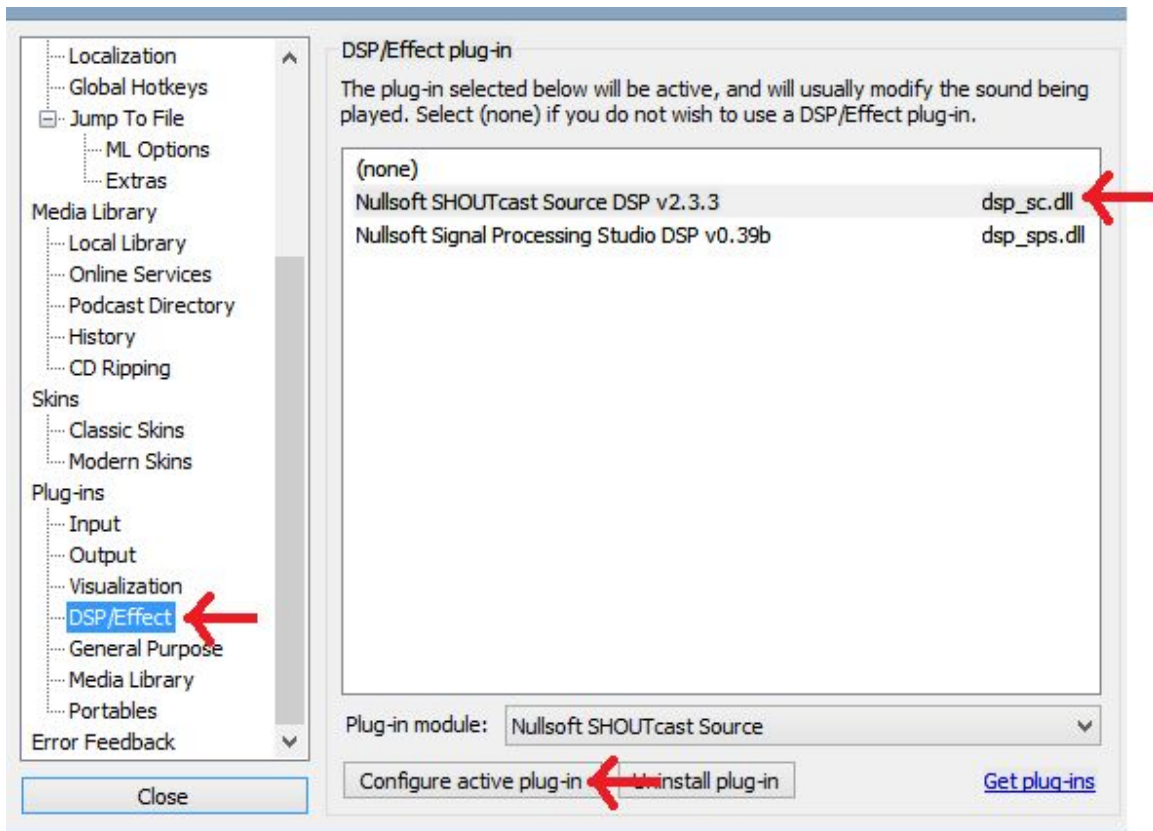
PORT: 8425

Stream ID: 1

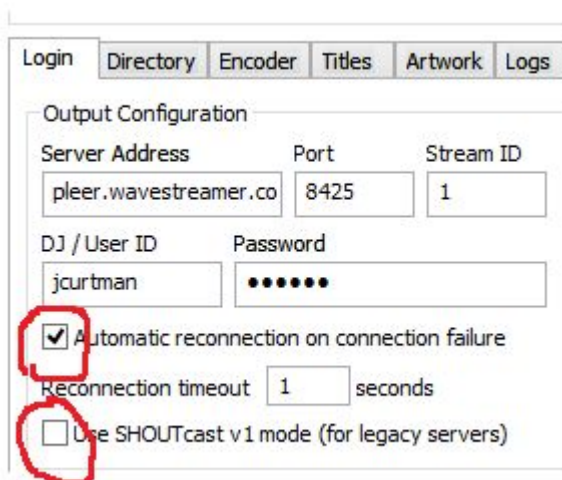
YOUR DJ ID

YOUR DJ PASSWORD

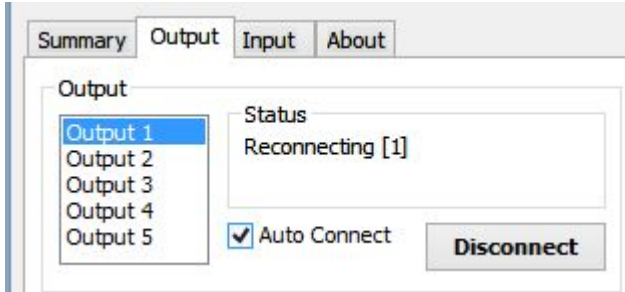
CLICK ON PLUG-INS / DSP / EFFECTS  
HIGHLIGHT THE SHOUTCAST SOURCE DSP  
CLICK ON CONFIGURE ACTIVE PLUG IN



Check the automatic re-connection box but do not check the “Use SHOUTcast v1 box



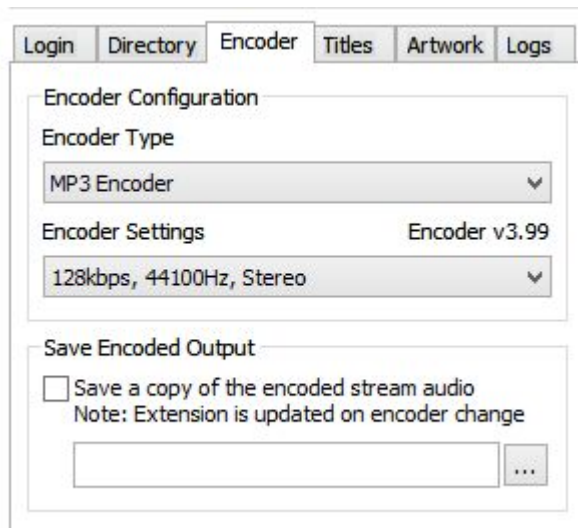
Check on the “Auto Connect” box



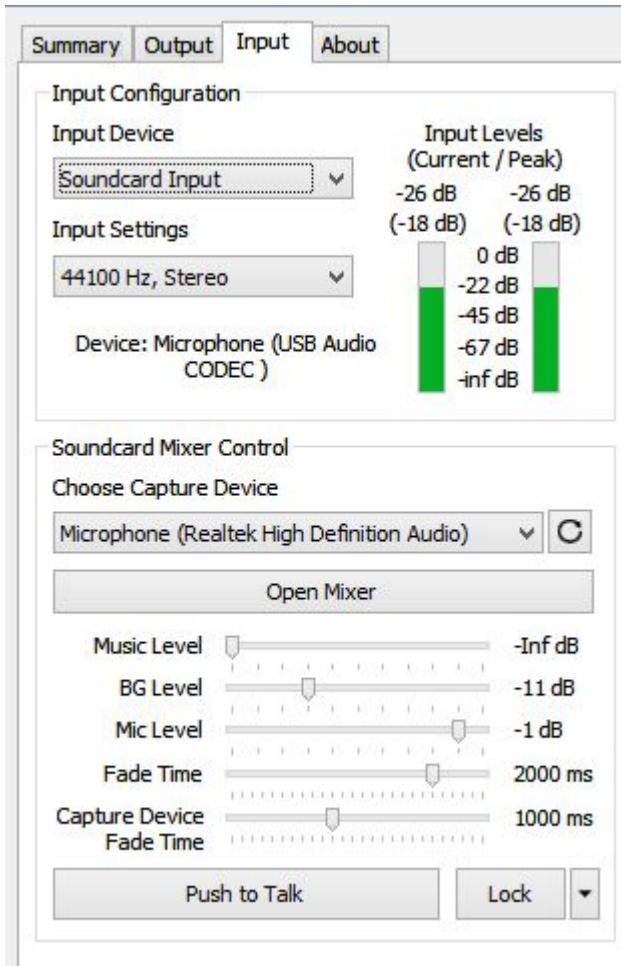
Click on the “Directory” Tab and complete as follows:



**Set the encoder to look like this...**



**The Input tab should look like this....**



The Winamp / Shoutcast will connect at the appointed time and you will be live.